

Trigger Data Backup System

The trigger data is recorded by a backup system as well as the main system. The trigger record output from the trigger module is split into two by two fanout boards in the trigger VME crate. One set of signals goes to the main system, and the other set goes into the backup system.

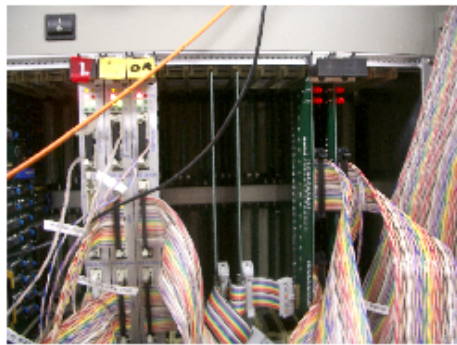


Figure 1: Fanout boards on the right



Figure 2: Backup trigger VME crate

The data is recorded by `trigger.in.awa.tohoku.ac.jp` in the e-hut. The default directory for the kdf and logger files is `/data`. The names of the kdf and logger

files contain the time when the run started: trigger-backup-YY-MM-DD-hh-mm-ss.kdf, and logger-trigger-backup-YY-MM-DD-hh-mm-ss.xml. Switching runs are done automatically by kinoko. Unless there is a problem, shifters do not need to manually start or stop runs. The NsumMax distributions and the trigger data flow in the viewer should look the same as the ones in the viewer for the main system.

To manually start a run, type

```
daq@goose01> start-trigger-backup
```

from daq@goose01. When the system starts up, a viewer, a control panel, and a logger should appear. From the control panel, click "default" button, then "construct." When it becomes available, click the "start" button.

To manually stop a run, click the "stop" button on the control panel, and if you need to quit, click on the "quit" button when it becomes available.

Problems?

- When the backup trigger data flow stops or reduces significantly, but the trigger data flow in the main system is normal, manually stop the backup trigger run and reboot the backup trigger computer according to directions in this document. If this does not fix the problem, contact the experts.
- If you see an error message in red in the kinoko logger, it's most likely that you need to restart a trigger backup run.

How to reboot the backup trigger computer (Default):

```
daq@goose01>reboot-trigger-backup
```

When reboot is finished, manually start a run.

How to reboot the backup trigger computer (If default instructions do not work):

Log into trigger.in.awa.tohoku.ac.jp by typing,

```
daq@goose01>ssh daq@trigger.in.awa.tohoku.ac.jp (password=inotani06)
```

We've had problems with name resolution for trigger. If the above doesn't work try using the IP address directly:

```
daq@goose01>ssh daq@172.28.196.75
```

Once in trigger.in.awa.tohoku.ac.jp, type,

```
daq@trigger>sudo reboot
```

When trigger.in.awa.tohoku.ac.jp is finished rebooting, manually start a run.

If there is a problem, call or email Kathy, Kazumi, or Sanshiro

Sanshiro: 090-1373-2436, sanshiro@awa.tohoku.ac.jp

Kathy: 650-725-2342, kedownum@stanford.edu

Kazumi: 650-725-2342, kazumi@stanford.edu